

Frequency Range:

40.00kHz / 48.00kHz / 58.00kHz

Features:

- Compact and light weight
- High sensitivity and sound pressure
- High reliability

Applications

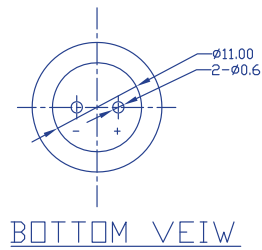
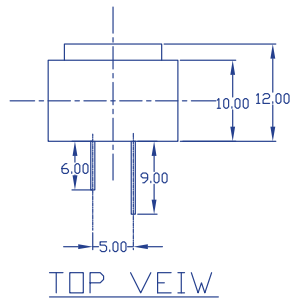
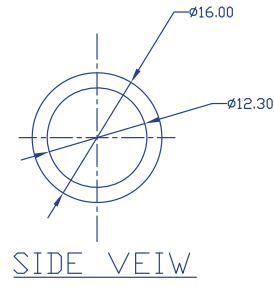
- Back sonar of automobiles, Parking meters.
Water level meters



■ Standard Specifications

Item	Value		
Frequency Range	40±1.0kHz	48±1.0kHz	58±1.0kHz
Transmitting Sound Pressure Level (0dB=0.02mPa)	103 dB Min	103 dB Min	103 dB Min
Receive Sensitive (0dB=10V/Pa)	-74dB Min	-74dB Min	-85dB Min
Directivity (x-y)	110×50°	110×50°	90×45°
Operating Temperature Range	-40~+80 °C	-40~+80 °C	-40~+80 °C
Operable Temperature Range	-40~+85 °C	-40~+85 °C	-40~+85 °C
Capacitance (at 25 °C 1kHz)	2000±15% pF	2000±15% pF	2000±15% pF
Ringling	≤1.2 ms	≤1.2 ms	≤1.2 ms
Allowable Input Voltage(at 40kHz / 48Hz)	150 Vp-p	150 Vp-p	150 Vp-p
Using Method(Transmitter / Receive)	Dual Use	Dual Use	Dual Use
Structure	Water Proof	Water Proof	Water Proof

■ Dimensions (mm)



■ Directivity

Directivity in Overall Sensitivity

